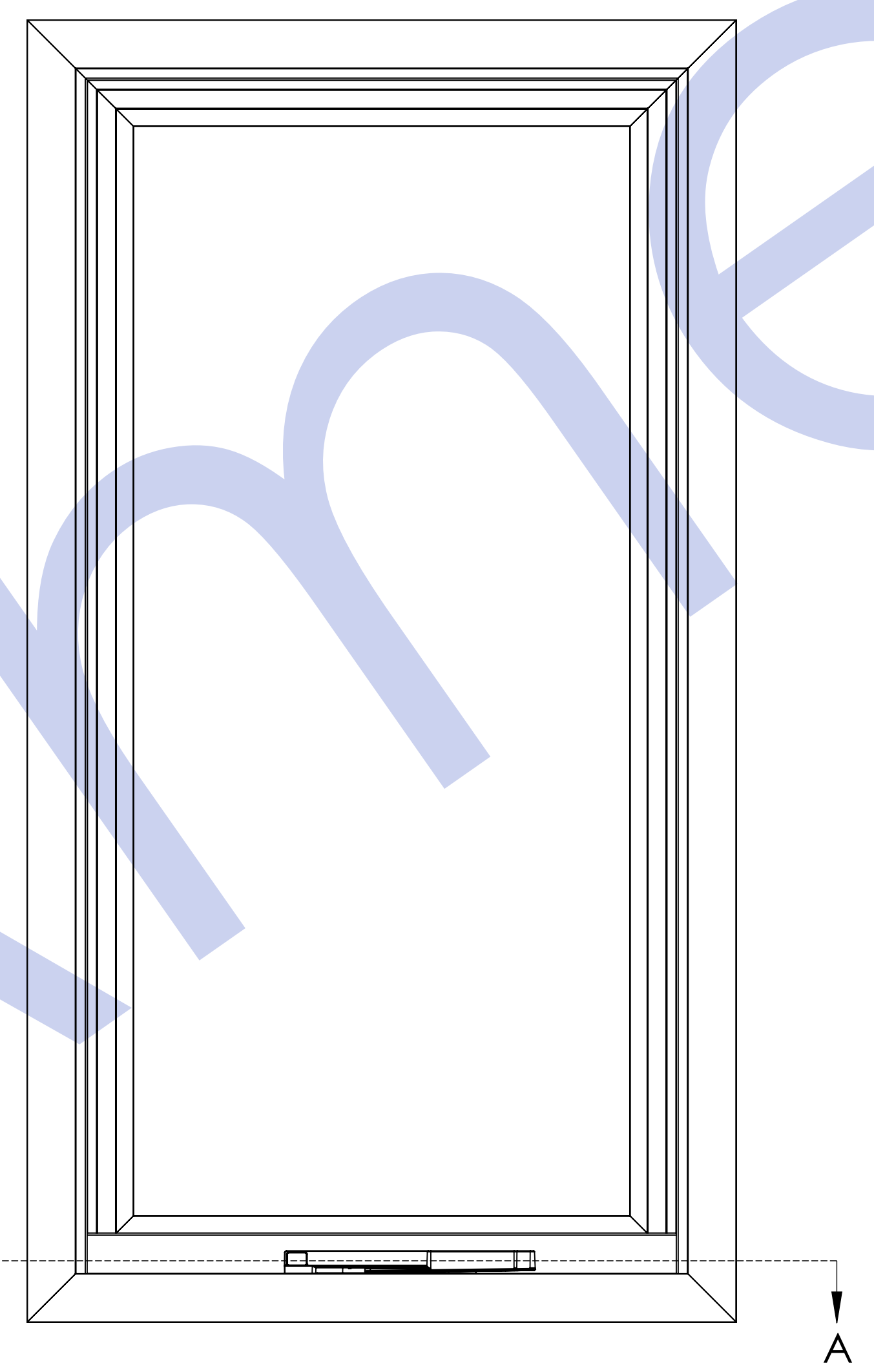
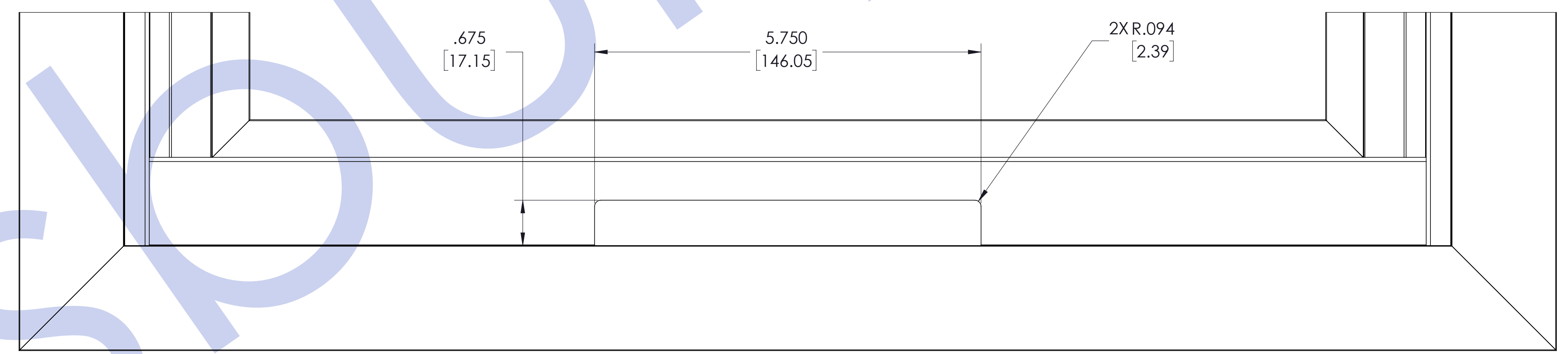
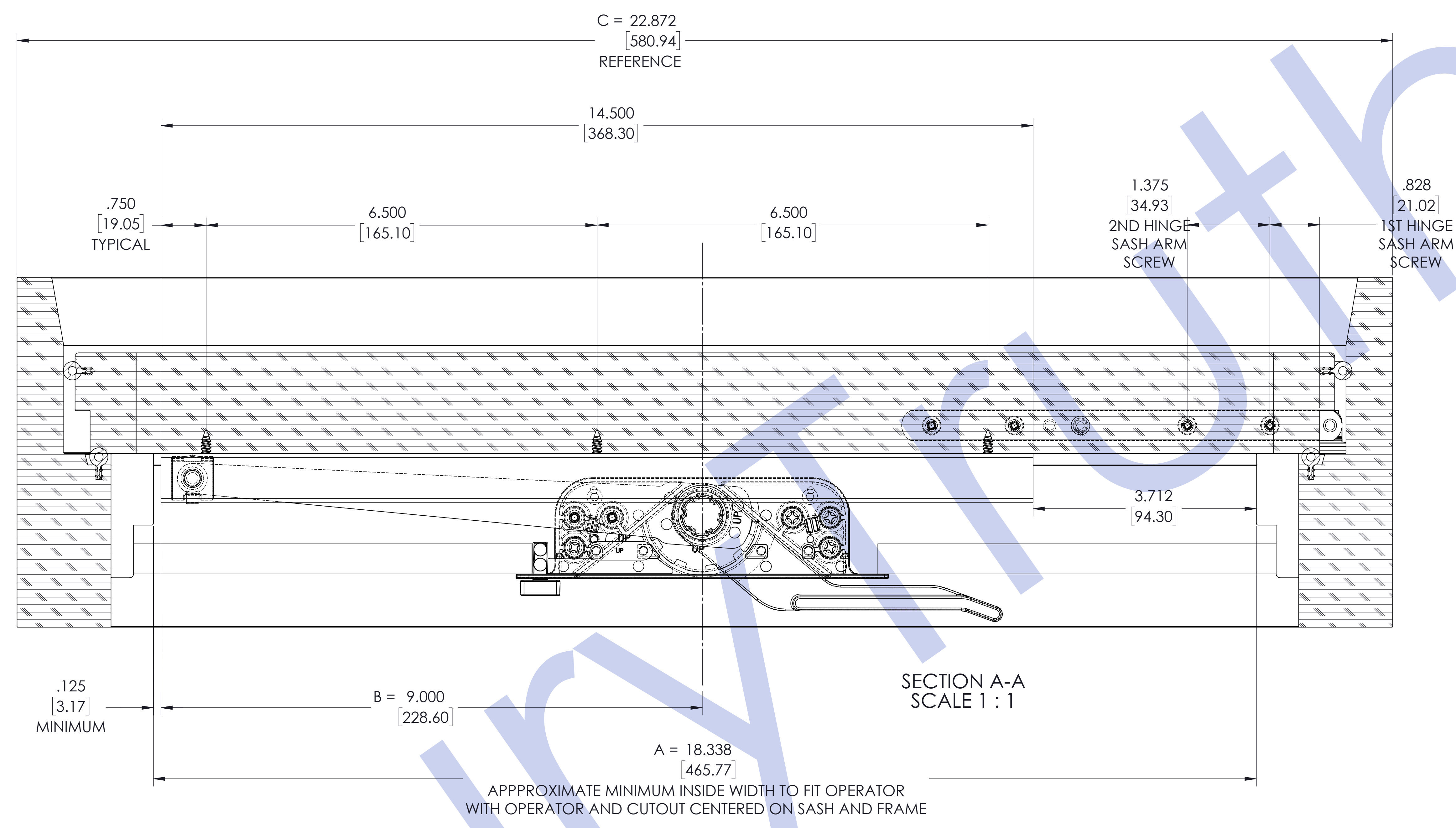
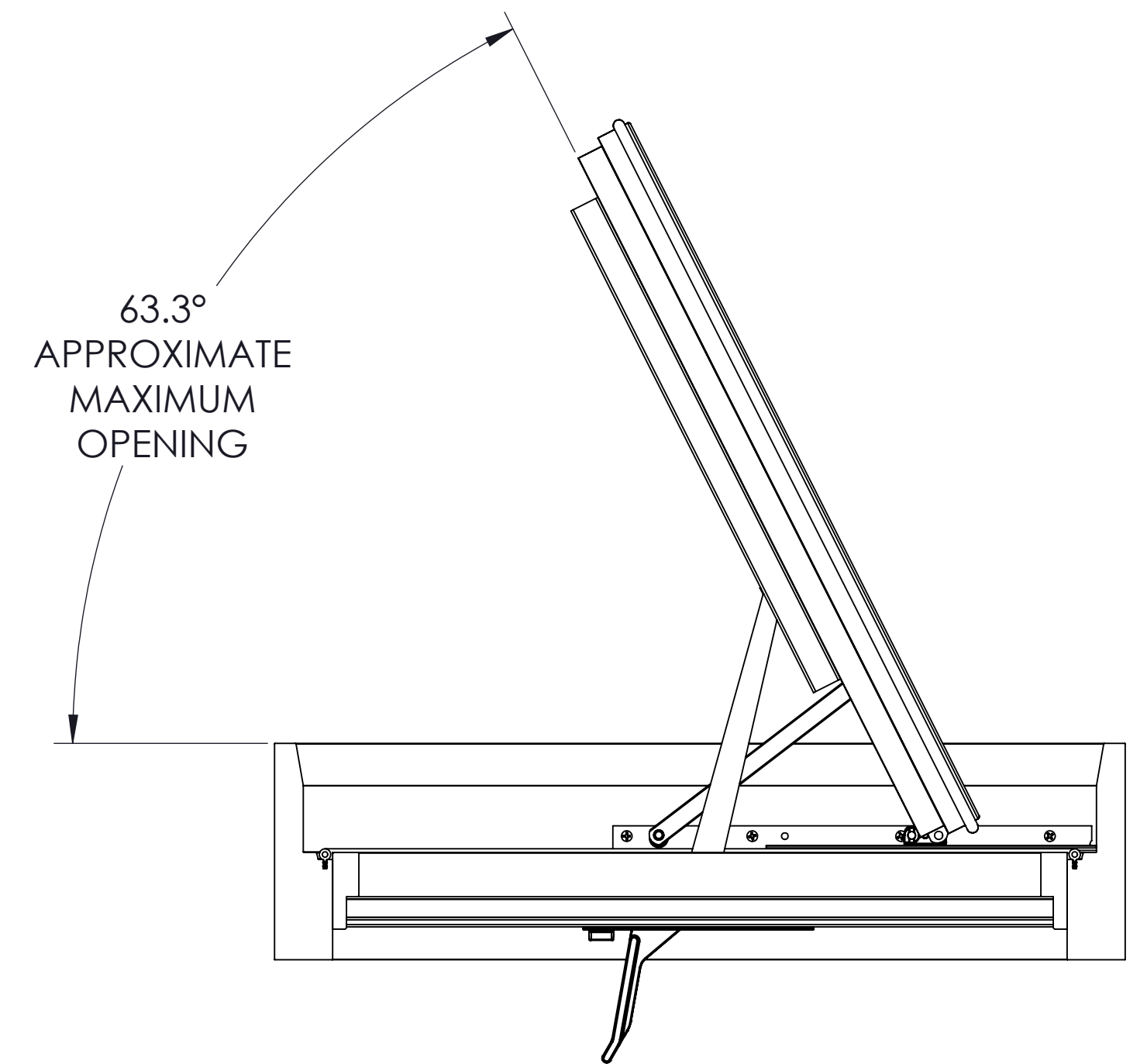
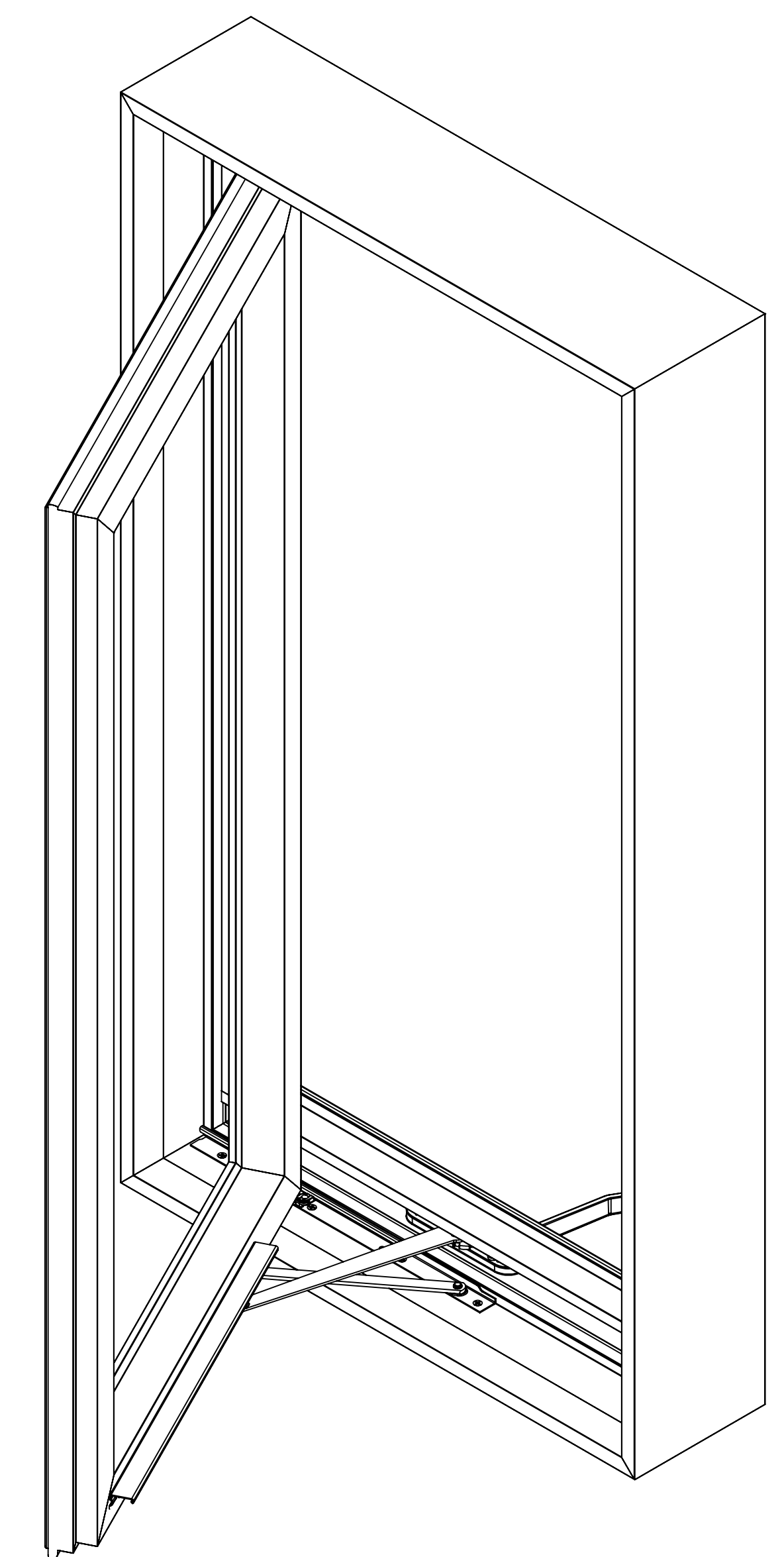
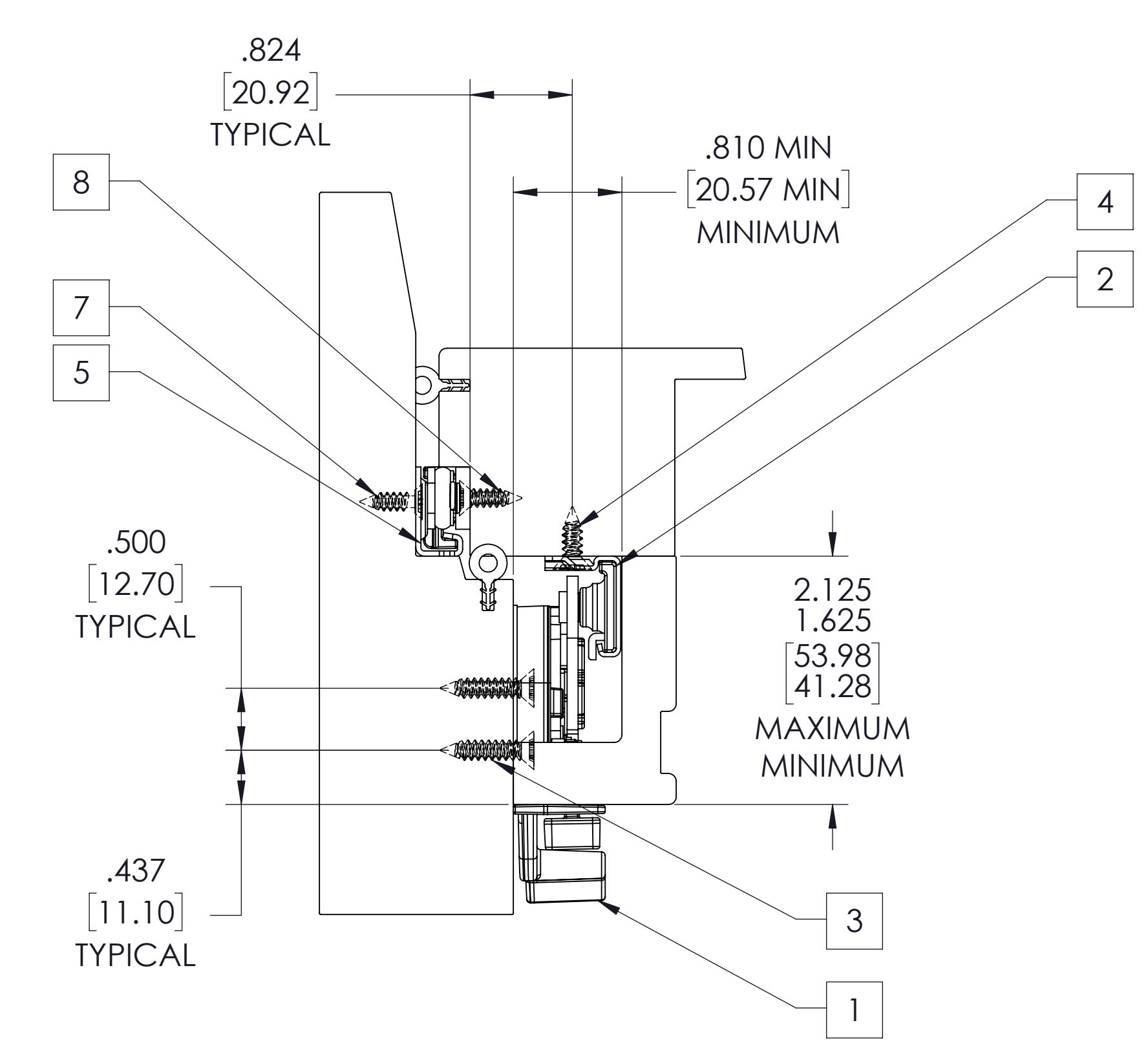


NO.	LOC.	HOW	DATE	BY
1		CREATED	12/30/2020	



ITEM NO.	PART NUMBER	DESCRIPTION	QTY.
1	65.01.XX.501(SHOWN)	OPER. LEVER CSMT 8.5" LH SS	1
2	11574.93	TRACK/SLIDER, MAXIMS 14.5	1
3	19218.92	SCREW 8X3/4 PH FH SMS YZP	6
4	19147	SCREW 8X1/2 PH FH SMS SS18-8	3
5	14.97.00.231	HGE CSM LL ASY NF WSH EG SP	1
6	14.97.00.230	HGE CSM UL ASY NF WSH EG SP	1
7	19070	SCREW 7X1/2 PH FU SMS SS18-8	8
8	19080.92	SCREW 7X1/2 PH FH SMS YZP	8

PART NUMBER	DESCRIPTION	"A" DIMENSION, MINIMUM INSIDE FRAME TO FRAME DISTANCE	"B" DIMENSION, MINIMUM INSIDE FRAME TO FRAME DISTANCE	"C" DIMENSION, MINIMUM INSIDE FRAME TO FRAME DISTANCE
65.00.XX.501/502	OPER. LEVER CSMT 10.5" LH SS	20.338"	11.000"	24.872"
65.01.XX.501/502	OPER. LEVER CSMT 8.5" LH SS	18.338"	9.000"	22.872"
65.02.XX.501/502	OPER. LEVER CSMT 4.5" LH SS	14.751"	7.250"	19.285"



TRUTH HARDWARE MAKES NO WARRANTY OR REPRESENTATION OF ANY KIND, EXPRESS OR IMPLIED, WITH RESPECT TO QUALITY, CONTENT, FORM, PERFORMANCE, FITNESS FOR PURPOSE, MERCHANTABILITY OR OTHERWISE OF THE APPLICATION DRAWINGS PROVIDED. THESE DRAWINGS ARE USED AT THE RECIPIENT'S OWN RISK AND TRUTH HARDWARE HAS AND SHALL HAVE NO RESPONSIBILITY FOR RECIPIENTS OR ANY THIRD PARTIES. USE OF THESE DRAWINGS OR ANY OF THE INFORMATION CONTAINED THEREIN, THE RECIPIENT AGREES TO INDEMNIFY, DEFEND, AND HOLD HARMLESS TRUTH HARDWARE AND ITS EMPLOYEES AND THEIR SUCCESSORS AND ASSIGNS FROM AND AGAINST ANY AND ALL CLAIMS, SUITS, LOSSES, DAMAGES OR COSTS INCURRED FROM USING THESE DRAWINGS OR ANY CONTENT THEREOF.

COMMENTS

Amesbury Truth
 Engineered Solutions. Trusted Results.
 700 West Bridge Street
 Owatonna, MN 55060
 Telephone 507-451-5620

DRAWN BY: M. NEFF	DATE: 12/30/2020
CHECKED BY: MDNI	SCALE: 1:4
PARTNAME: GENERIC LEVER OPERATOR APPLICATION	
PROJECT: GENERIC WOOD	DRAWING NO.: 21207A
REVISION: A	TITLE: E